

TURNILS MACHINE DIVISION



The machine in this picture may be fitted with additional equipment.

SUD 750 RRM - 3000
SUD ARR 3000

Blind fabric sewing machine – automatic and easy-to-use for cost-effective production

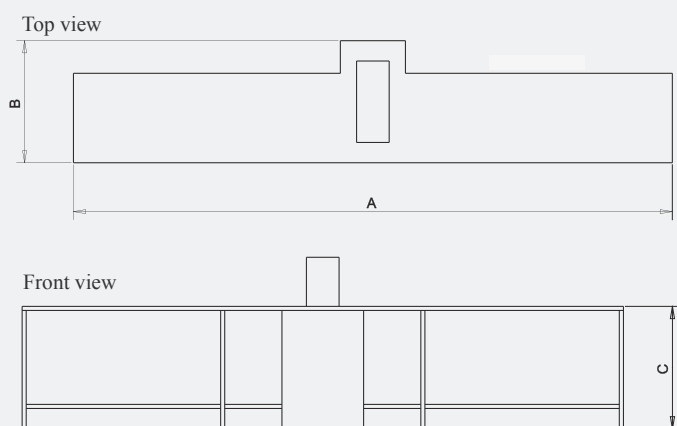
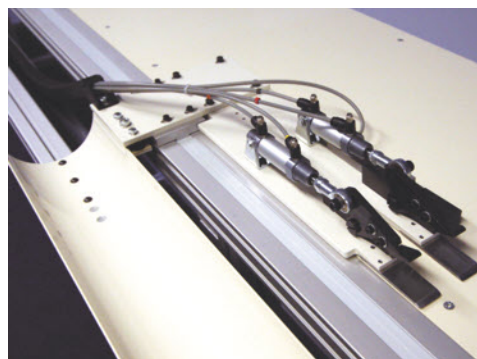
The 750 RRM - 3000 are an automatic sewing machines designed for easy and cost-effective handling of roller blind and roman fabrics. Particularly impressive when sewing roller fabrics of up to five metres, these versatile machines also handle roman, both lath tape and lath pocket, plus screen fabrics where they can offer an easier, safer and better quality alternative to welding.

Producing up to 150 seams per hour on blinds up to five metres long, the 750 RRM - 3000 and ARR 3000 are easy to learn and totally de-skills what are normally very skilled operations. The 750 RRM - 3000 and ARR 300 are used by a single operator and over a wide range of finishes, they will always assure stitching quality which is consistent and in alignment. The three-speed automatic operation allows for different fabric thicknesses and types, a range of bottom bar pockets are available, while an automatic bobbin winder is included to allow for rapid thread colour changes.

The 750 RRM - 3000 and ARR 3000 come as part of a comprehensive range of proven Turnils machinery, production equipment and support services to help you increase the range, capacity and efficiency of your fabric blind production.

SUD 750 RRM - 3000

SUD ARR 3000



| Cutting length (mm) | Machine dimensions (mm) | | |
|---------------------|-------------------------|-----|-----|
| | A | B | C |
| 3000 | 7360 | 850 | 980 |
| 4000 | 8360 | 850 | 980 |
| 5000 | 9360 | 850 | 980 |

750 RRM - 3000 & ARR 3000 features

- Easy to operate and maintain
- Sews fabrics up to 3m in length as standard
- Sews up to 150 seams per hour
- Three-speed operation for different fabric thicknesses
- Suits wide range of fabrics – roller, screen and roman
- Joins screen fabrics easily and safely compared to welding
- Double-turn bottom pocket as standard, single-turn optional
- Standard double-turn pocket size of 4cm requires 5cm of fabric
- Single-stitch fabric joining standard, double-stitch optional
- Automatic bobbin winder for rapid change of thread colour
- Support services i.e. technical support, spare parts, installation and training

Additional equipment

- Can be built to accommodate fabric lengths up to 5 m
- Folding unit with customized pocket size
- Folding unit to facilitate attachment of scallop

Technical data

Current: single phase 230 V (50/60 Hz)

1040 W Air pressure: 6 Bar